



## H753 OB SAR



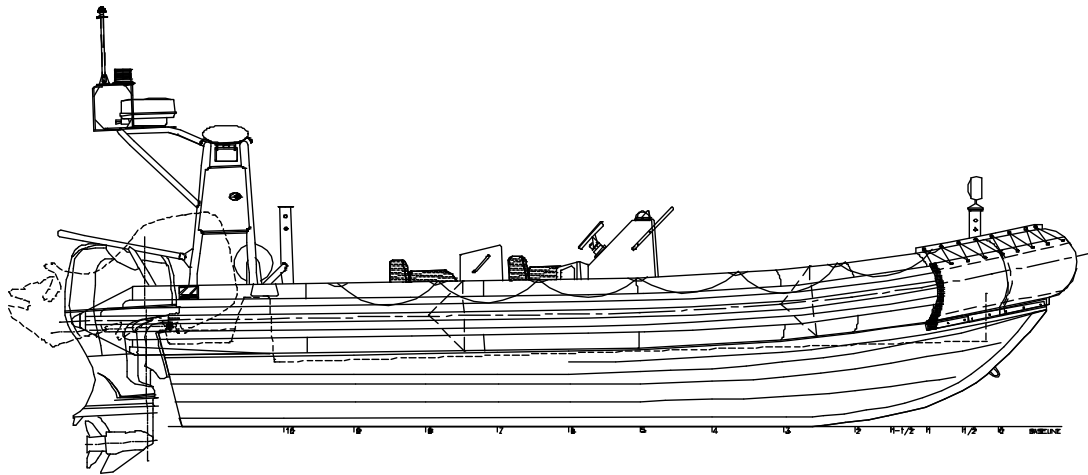
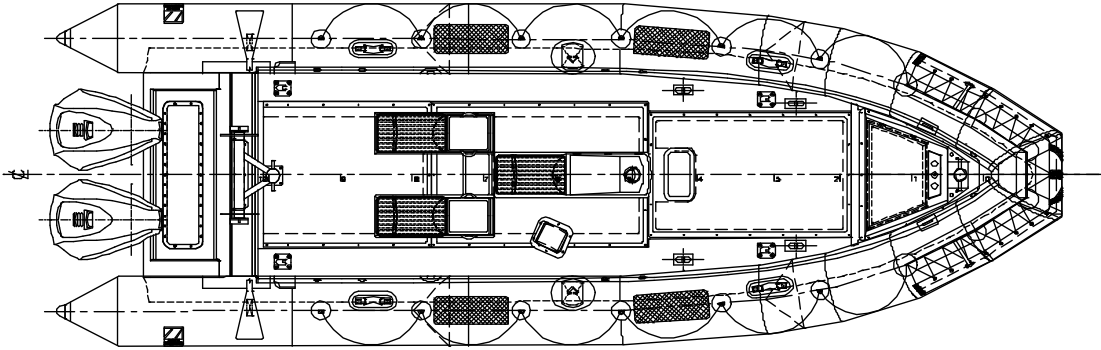
Considered the finest craft of their type in the world, the Zodiac Hurricane range of RIBS are mission specific and are used by the most knowledgeable and discriminating operators who demand the utmost in ruggedness and reliability. All Hurricane models have removable collars for ease of maintenance as well as the capability of interchanging with DuraRIB foam collars.

Zodiac Hurricane first supplied high speed outboard powered search and rescue RIBS in the 1970's. Since that time, the deck and seating configuration has been refined to meet the requirements of various rescue organizations worldwide.

The Zodiac Hurricane 753 OB SAR is typically used as a shore based boat operating independently in search and rescue, aids to navigation maintenance and law enforcement missions. The deep-V fiberglass hull and inflatable collar combined with self righting and jockey style seating; provides the seaworthiness, shock mitigation, stability and maneuverability required to operate reliably and effectively in a hostile maritime environment. The ruggedized hull and collar construction and highly responsive twin outboard motor propulsion system allows the Hurricane 753 to operate safely in heavy weather and breaking seas.



## GENERAL SPECIFICATIONS



### PHYSICAL CHARACTERISTICS:

- Length overall – 8.05 meters (26.4 ft.)
  - Beam overall – 2.74 meters (9.0 ft.)
  - Beam (collar deflated) – 2.03 meters (6.7 ft.)
  - Collar diameter - 0.56 meters (22 in.)
  - Collar volume – 3633 liters (128 cu. Ft.)
  - Fuel capacity – 503 liters (133 US gal.)
  - Displacement (with full fuel) – 2100 kg. (4000 lbs.)
  - Max Speed – 48 Knots, range 155 NM; 2 x 200 HP
-



## H753 OB SAR

---

### FULL TURN-KEY OB SAR BOAT DESCRIPTION

#### Hull and deck

- Fiberglass hull and deck – Vinylester resin and foam core; Foam flotation
- Kevlar reinforced beaching shoe
- *OPTIONS*: Colour available orange, grey, black or white; SKYDEX deck covering

#### Collar

- 5 chamber, 1670 dtx Neoprene/Hypalon inflatable tube with intercommunicating inflation/deflation valves and pressure relief valves
- Collar accessories – five Rubbing strakes, full length lifelines and non-slip step treads.
- Bow protection skirt
- *OPTIONS*: Auto inflate system, Durarib upgrade; Colour available orange, grey, black or white

#### Console

- Fiberglass jockey helm, radio operator and navigator consoles with enclosed storage.

#### Equipment

- Stainless steel bow eye and two heavy-duty stainless steel transom tie-downs
- Mooring – two transom cleats, tow post and bow post.
- Rope storage reel.
- Self righting system (compressed air inflation) with antenna platform and integrated rope guard.
- Under deck access hatch to aft hull cavity.
- Flush tiedowns – 4
- 2 1/2 pound fire extinguisher and stowage; Anchor with rode; Bow locker

#### Bilge pumping/draining

- High capacity deck drains fitted w/ scupper trunks.
- Manual and Electric bilge pumps.

#### Hoisting

- Integral SS hoisting fittings.
- Polyester webbing lift sling.

#### Electrical

- 12 VDC electrical system (23 circuit).
- 2 battery banks (Optima D34M batteries) with selector/isolator switches.
- 220 (16 amp) or 110 (30 amp) VAC shore-power system with battery charger.
- Dimmer switch (2) - instrument lights and separate dimmer for compass light.
- Handheld/fixed searchlights and fixed flood lights on arch.
- Blue law enforcement light
- 2 Accessory plugs (marine and cigarette lighter style)

#### Navigation/communications

- Navigation lights in accordance with COLREGS '72 for vessels < 20 meters length.
- Electric horn; Magnetic compass.
- *OPTIONS*: communications and navigation equipment on request.

#### Fuel system

- Rotomolded polyethylene fuel tanks - 85 US gal (322 liters) and 48 US gal (181 liters) with fuel gauge and fuel/water separators.

#### Propulsion

- Twin OBM pre-rig with controls and gauges; Hydraulic steering
- *OPTIONS*: outboard motors

#### Additional Options Available

- Through Life Support based on operating hours, mission profile, location and operator profile; includes recommended maintenance schedule and spare parts and depot level maintenance
  - Fastener upgrade to metric sizes from imperial
  - Post Delivery Orientation: commissioning, introductory vessel instruction, systems operation and recommended maintenance (maximum 6 attendees per session; one week minimum duration) held on location
-



## H753 OB SAR



The overall appearance of the H753 including all available Zodiac options is a protected trademark of Zodiac.



Disclaimer: Photos may vary with options  
Descriptions/Specifications are subject to change  
August 2005

For more information please contact your Zodiac dealer or visit our website.