



H753 OB FC



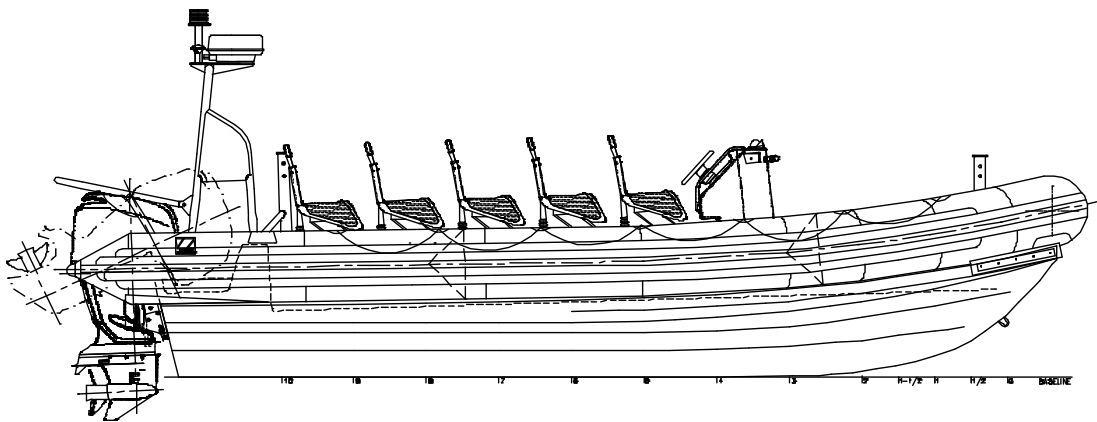
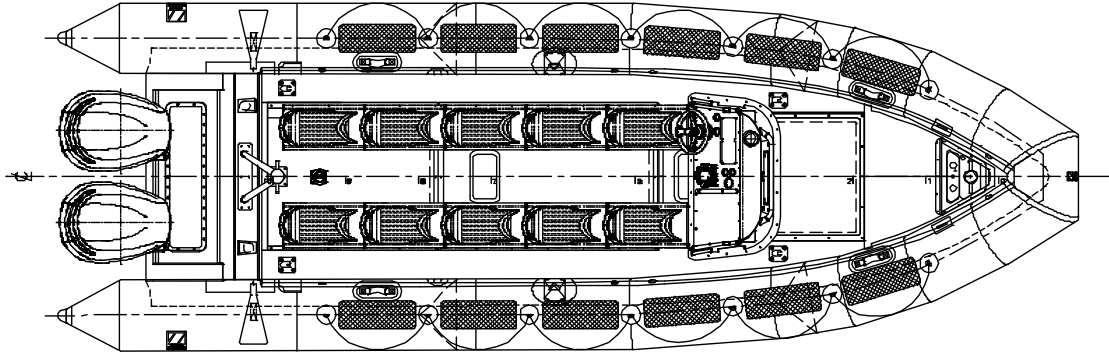
Considered the finest craft of their type in the world, the Zodiac Hurricane range of RIBS are mission specific and are used by the most knowledgeable and discriminating operators who demand the utmost in ruggedness and reliability. All Hurricane models have removable collars for ease of maintenance as well as the capability of interchanging with Durarib foam collars.

Zodiac Hurricane first supplied high speed outboard powered assault RIBS in the 1994. Since that time, the deck and seating configuration has been refined to meet the requirements of various military organizations worldwide.

The Zodiac Hurricane 753 OB FC is typically used by a two man crew to transport an eight person commando team in ship to shore, ship to ship and shore to ship assault missions. The deep Vee fiberglass hull and inflatable collar combined with jockey style seating; provides the seaworthiness, shock mitigation, stability, maneuverability and low signature required to operate reliably and effectively in a hostile maritime environment. The ruggedized hull and collar construction and highly responsive twin outboard motor propulsion system allows the Hurricane 753 to operate safely in heavy weather and alongside larger craft during ship boarding operations.



GENERAL SPECIFICATIONS



PHYSICAL CHARACTERISTICS:

- Length overall – 8.05 meters (26.4 ft.)
- Beam overall – 2.74 meters (9.0 ft.)
- Beam (collar deflated) – 2.03 meters (6.7 ft.)
- Collar diameter - 0.56 meters (22 in.)
- Collar volume – 3633 liters (128 cu. Ft.)
- Fuel capacity – 503 liters (133 US gal.)
- Displacement (with full fuel) – 2100 kg. (4000 lbs.)
- Max Speed – 44 Knots with 1500 kg. payload, range 145 NM; Max HP 2 x 200 HP



FULL TURN-KEY OB FC BOAT DESCRIPTION

Hull and deck

- Fiberglass hull and deck – Vinylester resin and foam core with ISO6185 foam flotation
- *OPTIONS*: Colours available orange, grey, black or white

Collar

- 5 chamber, 1670 dtx Neoprene/Hypalon inflatable tube with intercommunicating inflation/deflation valves and pressure relief valves
- Collar accessories – five Rubbing strakes, full length lifelines and non-slip step treads
- *OPTIONS*: Colours available orange, grey, black or white

Console

- Two-person aluminum console with handrails.

Seating

- Two crew and eight passengers on FC jockey seating.

General

- Stainless steel bow eye and two heavy-duty stainless steel transom tie-downs
- Mooring – two transom cleats, tow post and bow post.
- Aft antenna / light mast
- Outboard motor / rope guard.
- 2 1/2 lb. fire extinguisher and stowage
- Trim tabs
- Full length KEVLAR beaching shoe (keel protection)
- Shipping preparation (SHIPPING CRADLE NOT INCLUDED)

Bilge pumping/draining

- High capacity deck drains fitted w/ scupper trunks.
- Manual and Electric bilge pumps.

Hoisting

- Recessed 4-point hoisting fittings.

Electrical

- 12 VDC electrical system (23 circuit).
- Three battery banks (Optima D34M batteries) with selector/isolator switches.
- 220 (16 amp) or 110 (30 amp)VAC shore-power system with battery charger.
- Dimmer switch (2) - instrument lights and separate dimmer for compass light.
- Handheld searchlight; 2 Accessory plugs (marine and cigarette lighter style)

Navigation/communications

- Navigation lights in accordance with COLREGS '72 for vessels < 20 meters length.
- Electric horn; Magnetic compass.

Fuel system

- Rotomolded polyethylene fuel tanks - 85 US gal (322 liters) and 48 US gal (181 liters) with fuel gauge and fuel/water separators.

Propulsion

- Twin outboard motor pre-rigging with controls and gauges.
- Hydraulic steering

Additional Options Available

- SKYDEX shock mitigating flooring, AUTO INFLATE system (IC Valve upgrade required), DURARIB foam collar upgrade, Fasteners upgrade to Metric, FC jockey seat to Ullman shock mitigating seat
 - Outboard Motors and Propellers, Communications and Navigation equipment and Commissioning on request
 - Through Life Support based on operating hours, mission profile, location and operator profile; includes recommended maintenance schedule and spare parts and depot level maintenance
 - Fastener upgrade to metric sizes from imperial
Post Delivery Orientation: commissioning, introductory vessel instruction, systems operation and recommended maintenance (maximum 6 attendees per session; one week minimum duration) held on location
-



H753 OB FC



The overall appearance of the H753 including all available Zodiac options is a protected trademark of Zodiac.



Disclaimer: Photos may vary with options
Descriptions/Specifications are subject to change
August 2005

For more information please contact your Zodiac dealer or visit our website.