



ZODIAC HURRICANE TECHNOLOGIES, INC.

Professional Division

H630 MID IO



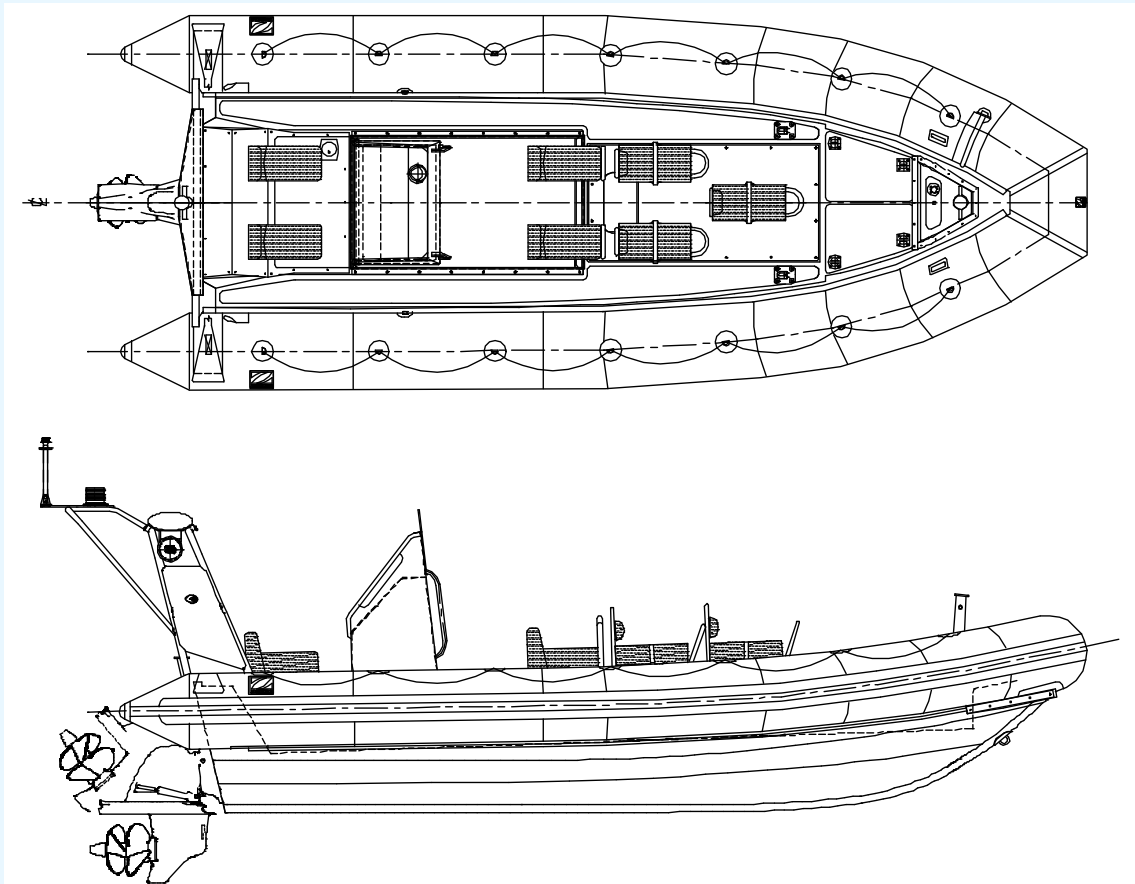
Considered the finest craft of their type in the world, the Zodiac Hurricane range of RIBS are mission specific and are used by the most knowledgeable and discriminating operators who demand the utmost in ruggedness and reliability. All Hurricane models have removable collars for ease of maintenance as well as the capability of interchanging with DuraRIB foam collars.

Zodiac Hurricane first supplied shipboard diesel RIBS in the 1970's. Since that time, more than 300 shipboard RIBS have been supplied to various navies and coast guards worldwide.

The Zodiac Hurricane 630 Mid IO is used as a shipboard boat for a variety of missions including search and rescue, law enforcement and force protection. The deep-V fiberglass hull and inflatable collar combined with self righting and jockey style seating; provides the seaworthiness, shock mitigation, stability and maneuverability required to operate reliably and effectively in a hostile maritime environment. The ruggedized hull and collar construction and highly responsive diesel engine/outdrive propulsion system allows the Hurricane 630 to be safely launched and recovered in high sea-states.



GENERAL SPECIFICATIONS



PHYSICAL CHARACTERISTICS:

- Length overall – 6.7 meters (22 ft.)
- Beam overall – 2.59 meters (8.5 ft.)
- Beam (collar deflated) – 1.89 meters (6.2 ft.)
- Collar diameter - 0.53 meters (21 in.)
- Collar volume – 2872 liters (101 cu. Ft.)
- Fuel capacity – 181 liters (48 US gal.)
- Displacement (with full fuel) – 2000 kg. (4400 lbs.)
- Max Speed – 38 Knots, range 145 NM; 225 HP



FULL TURN-KEY MID IO BOAT DESCRIPTION

Hull and deck

- Fiberglass hull and deck – Isophthalic polyester resin and balsa core with ISO6185 foam flotation
- *OPTIONS*: Colours available are orange, grey, black or white

Collar

- 5 chamber, 1670 dtx Neoprene/Hypalon inflatable tube with intercommunicating inflation/deflation valves and pressure relief valves w/ caps
- Collar accessories – five Rubbing strakes, full length lifelines and non-slip step treads
- *OPTIONS*: Colours available are orange, grey, black or white

Console

- Two-person aluminum console/engine cover with windshield and welded aluminum handrail.

Seating

- Crew (2 persons) and 5 passengers seating on jockey style seats.

General

- Stainless steel bow eye and two heavy-duty stainless steel transom tie-downs
- Mooring – two transom cleats, tow post (mounted at transom) and bow post.
- Under deck access hatch to transom hull cavity.
- Flush tiedowns – 4; 2 1/2 pound fire extinguisher and stowage
- Self-righting system (CO2) and frame with antenna platform.
- Shipping preparation (SHIPPING CRADLE NOT INCLUDED)

Bilge pumping/draining

- High capacity deck drains fitted w/ scupper trunks; Manual and Electric bilge pumps.

Hoisting

- Integral SS hoisting fittings with 4 leg sling with polyester webbing legs, galvanized proof loaded shackles and stainless steel master link.

Electrical

- 12 VDC electrical system (13 circuit).
- 2 battery banks (Optima D34M batteries) with selector/isolator switch.
- 220 (16 amp) or 110 (30 amp) VAC shore-power system with battery charger and engine coolant heater.
- Dimmer switch (2) - instrument lights and separate dimmer for compass light.
- Handheld searchlight; Blue law enforcement light
- 2 Accessory plugs (marine and cigarette lighter style)

Navigation/communications

- Navigation lights in accordance with COLREGS '72 for vessels < 20 meters length.
- Electric horn; Magnetic compass.

Fuel system

- Rotomolded polyethylene fuel tank - 48 US gal (181 liters) with fuel gauge and fuel/water separators.

Engine/drive

- Volvo D4-225 HP diesel engine with DP outdrive; Hydraulic steering

Additional Options Available

- SKYDEX shock mitigating flooring, AUTO INFLATE system (IC Valve upgrade required), DURARIB foam collar upgrade, Rigid hoisting frame (release hook not included), Communications and Navigation equipment and Commissioning on request.
- Through Life Support based on operating hours, mission profile, location and operator profile; includes recommended maintenance schedule and spare parts and depot level maintenance
- Fastener upgrade to metric sizes from imperial
- Post Delivery Orientation: commissioning, introductory vessel instruction, systems operation and recommended maintenance (maximum 6 attendees per session; one week minimum duration) held on location



The overall appearance of the H630 including all available Zodiac options is a protected trademark of Zodiac.

For more information please contact your Zodiac dealer or visit our website at www.zodiac.com

Disclaimer: Photos may vary with options
Descriptions/Specifications are subject to
change
August 2005

