



H1110 AFT IO COMMANDO



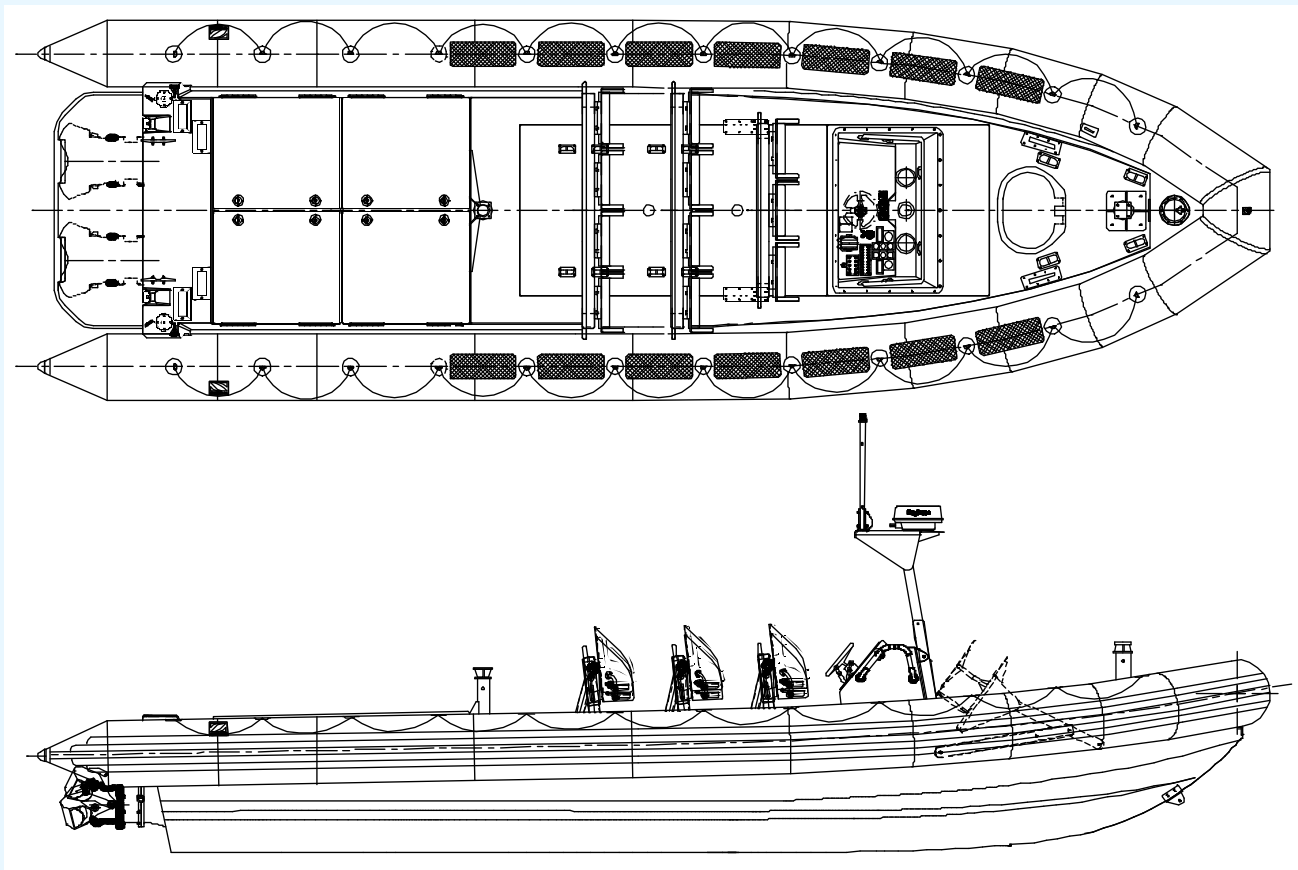
Considered the finest craft of their type in the world, the Zodiac Hurricane range of RIBS are mission specific and are used by the most knowledgeable and discriminating operators who demand the utmost in ruggedness and reliability. All Hurricane models have removable collars for ease of maintenance as well as the capability of interchanging with DuraRIB foam collars.

Zodiac Hurricane first supplied large fiberglass assault RIBS with diesel/waterjet propulsion in the mid 1990's. Since that time, various propulsion system and seating options have been refined to meet the requirements of various military organizations worldwide. Seating is fitted with Quikfit attachment system to allow the deck to be quickly reconfigured for various mission options. When equipped with inflatable collar, the Hurricane 1110 is capable of transport by road or aircraft.

The Zodiac Hurricane 1110 AFT IO Commando is typically used by a three man crew to transport an eight person commando team complete with inflatable raiding craft in ship to shore, ship to ship and shore to ship assault missions. The deep-V fiberglass hull and inflatable collar combined with wraparound bolsters; provides the seaworthiness, shock mitigation, stability, maneuverability and low signature required to operate reliably and effectively in a hostile maritime environment. The ruggedized hull and collar construction allows the Hurricane 1110 to operate safely in heavy weather and alongside larger craft during ship boarding operations.



GENERAL SPECIFICATIONS



PHYSICAL CHARACTERISTICS:

- Length overall – 11 meters (36.1 ft.)
 - Beam overall – 3.52 meters (11.6 ft.)
 - Beam (collar deflated) – 2.7 meters (8.9 ft.)
 - Collar diameter - 0.61 meters (24 in.)
 - Collar volume – 6333 liters (224 cu. Ft.)
 - Fuel capacity – 1000 liters (264 US gal.)
 - Displacement (with full fuel) – 5900 kg. (13000 lbs.)
 - Max Speed – 42 Knots with 1500 kg. payload, range 220 NM; Max HP 2 x 440 HP
-



H1110 AFT IO COMMANDO

BOAT DESCRIPTION

Hull and deck

- Fiberglass hull and deck – Fire retardant Vinylester resin and foam core
- *OPTIONS*: Colour available orange, grey, black or white; SKYDEX deck covering

Collar

- 9 chamber, 1670 dtx Neoprene/Hypalon inflatable tube with inflation/deflation valves and pressure relief valves w/ caps
- Collar accessories – five Rubbing strakes, full length lifelines and non-slip step treads
- *OPTIONS*: Colour available orange, grey, black or white; Auto inflate system, Durarib upgrade

Console

- Three-person fiberglass console with front access hatch and welded aluminum wraparound handrail.

Seating

- Maximum 3 crew and 12 passengers.
- *OPTIONS*: Leaning bolster, leaning bolster with drop seat or suspension jockey seating.

Equipment

- Stainless steel bow eye and two heavy-duty stainless steel transom tie-downs
- Mooring – two transom cleats, tow post and bow post.
- Under deck access hatch to foredeck hull cavity; Flush tie-downs – 12.
- Fixed fire system in engine space and 2 – 5 pound CO2 fire extinguisher's with stowage
- Aluminum guard/swim platform over drives; Folding antenna arch; Flag pole on transom.

Bilge pumping/draining

- High capacity deck drains fitted w/ scupper trunks and inlet screens.
- Manual and Electric bilge pumps.

Hoisting

- Integral SS hoisting fittings with 4 leg sling with polyester webbing legs, galvanized proof loaded shackles and steel master link.

Electrical

- 24 VDC electrical system (20 circuit) with converter for 12 volt subsystem (5 circuit)
- 2 X 24 VDC battery banks (Optima D34M batteries) with selector/isolator switches.
- 220 (16 amp) or 110 (30 amp) VAC shore-power system with battery charger and engine coolant heaters.
- Deck lights – red & white for inside engine space, inside console and deck areas.
- Dimmer switch (2) - instrument lights and separate dimmer for compass light; Ground plate system w/ 2 Dynaplates

Navigation/communications

- Navigation lights in accordance with COLREGS '72 for vessels < 20 meters length
- Electric horn; Magnetic compass.
- Optional communications and navigation equipment on request.

Fuel system

- Welded aluminum fuel tanks (2) - 132 US gal (500 liters) each with fuel gauge, fuel/water separators and fuel stripping system.

Engine/drive options

- Twin Yanmar 6LY-2A (440HP @ 3300 RPM) with Konrad 520 outdrives, SS propellers.
- Twin Yanmar 6LY-2A (440HP @ 3300 RPM) with Kamewa FF310 waterjets
- Twin Cummins QSB380-M (380 HP @ 3000 RPM) with Twin Disc TDJ110 waterjets
- Twin Cummins QSB380-M (380 HP @ 3000 RPM) with Hamilton 274 waterjets

Additional Options Available

- Through Life Support based on operating hours, mission profile, location and operator profile; includes recommended maintenance schedule and spare parts and depot level maintenance
 - Fastener upgrade to metric sizes from imperial
 - Post Delivery Orientation: commissioning, introductory vessel instruction, systems operation and recommended maintenance (maximum 6 attendees per session; one week minimum duration) held on location
-



H1110 AFT IO COMMANDO



The overall appearance of the H1110 including all available Zodiac options is a protected trademark of Zodiac.



Disclaimer: Photos may vary with options
Descriptions/Specifications are subject to change
August 2005

For more information please contact your Zodiac dealer or visit our website.